

# N3

# OMIKRON

Una soluzione compatta e flessibile per valorizzare lo spazio attraverso l'illuminazione d'accento e diffusa di facciate, spazi urbani e aree verdi.

Compact and flexible solution to enhance spaces through accent and diffuse lighting of facades, urban spaces and green areas.



220 240V	50 60Hz	CL II	IP66	IK08	ta -30°C +50°C
-------------	------------	-------	------	------	----------------------



#### DATI PRESTAZIONALI / PERFORMANCE DATA

**Flusso apparecchio** / Fitting flux:  
1210 - 1310 lm

**Potenza apparecchio** / Fitting power:  
20W

**Indice di resa cromatica** / Colour Rendering Index:  
CRI ≥ 90, SDCM ≤ 3

**Illuminazione intelligente** / Smart lighting:  
DALI su richiesta / DALI on request

#### TEMPERATURA COLORE COLOUR TEMPERATURE

- 2700 K
- 3000 K
- 4000 K

#### MATERIALI / MATERIALS

**Corpo e sistemi di fissaggio** / Body and fitting system:  
pressofusione di lega d'alluminio UNI EN AB 47100  
(contenuto rame < 1%) / die-cast aluminum alloy UNI EN  
AB 47100 (copper content < 1%)

**Schermo** / Screen:  
vetro piano temprato  
tempered flat glass

**Gruppo ottico** / Optical unit:  
lente in tecnopolimero ad alta trasparenza  
highly transparent technopolymer lens

**Finitura** / Finish:  
fosfocromatazione e verniciatura in polveri di poliestere  
realizzata in 16 fasi per la miglior resistenza agli  
agenti atmosferici / phospho-chromatation treated  
and polyester powder-coated in 16 phases to increase  
weather resistance

#### COLORI / COLOURS

- SABLÉ 100 NOIR

#### CARATTERISTICHE / FEATURES

**Peso massimo** / Max weight:  
2 kg

**Alimentazione elettronica** / Electronic power supply:  
inclusa / included

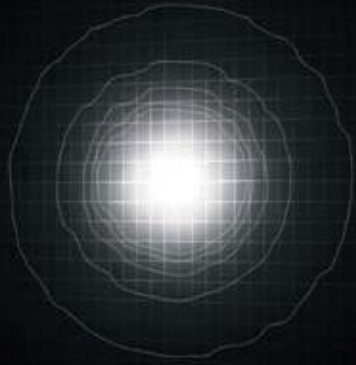
**Precablaggio** / pre-wiring:  
prodotto pre-cablato con cavo  
pre-wired product with cable

**Installazione** / Installation:  
terra, parete, palo / ground, wall, pole

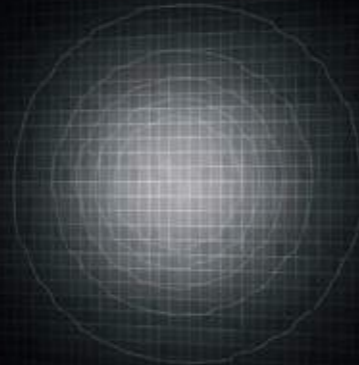


OTTICHE / OPTICS

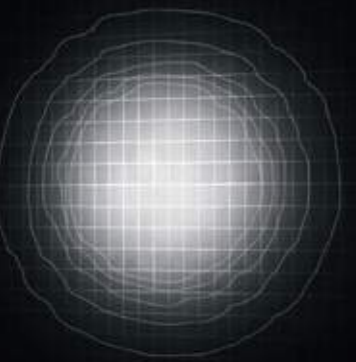
C 10° Narrow Beam



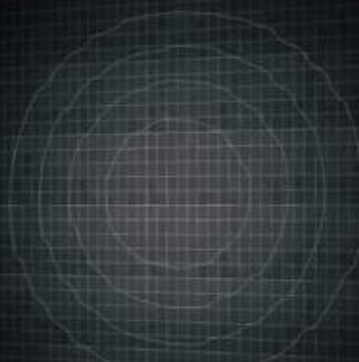
D 45° Wide Beam



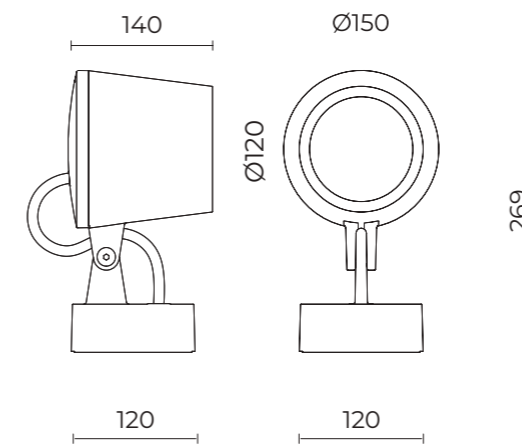
M 25° Medium Beam



U-D 90° Diffused Beam



**Omikron**  
Flood / Pole



**DATI TECNICI / TECHNICAL DATA**

**Installazione / Installation:**  
terra, parete, palo (Ø 102 mm) con accessorio  
ground, wall-mounted, pole (Ø 102 mm) with accessory

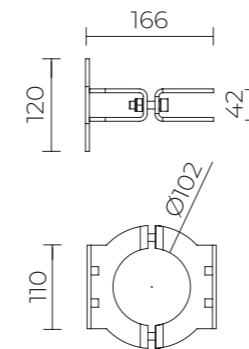
Disponibili, su richiesta, versioni con honeycomb  
On request, are available versions with honeycomb

**Inclinazione / Inclination:**  
+90° ÷ -45°, rotazione ±30°  
+90° ÷ -45°, rotation ±30°

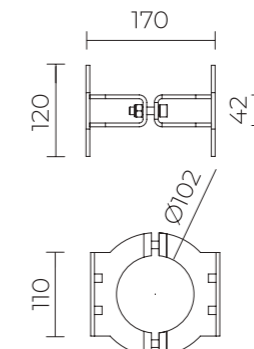


**ACCESSORI / ACCESSORIES**

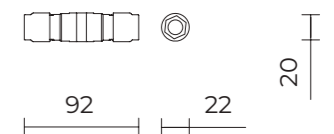
**060M904C0**  
**B136 Anello per palo Ø 102 mm**  
Single pole ring for pole Ø 102 mm



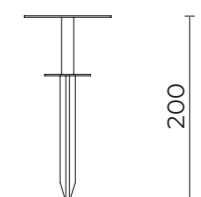
**060M905C0**  
**Anello doppio per palo Ø 102 mm**  
Double pole ring for pole Ø 102 mm



**06KS918C0**  
**B137 - Connettore 2 vie IP68**  
2-way connector IP68



**060M901C0**  
**B135 - Picchetto per interramento**  
Spike for ground installation



**KLAIPEDA**  
Lithuania

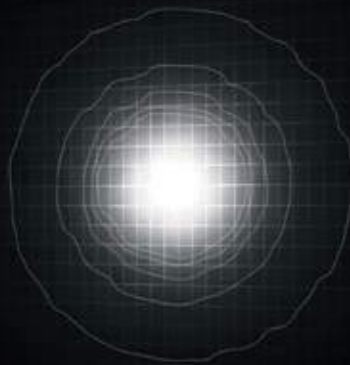


**NOLI**  
Italy

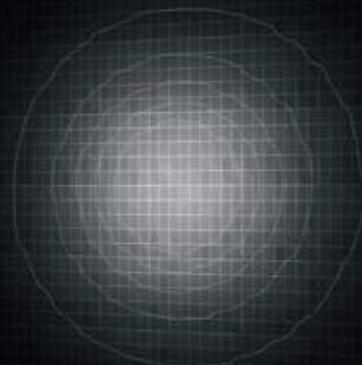


OTTICHE / OPTICS

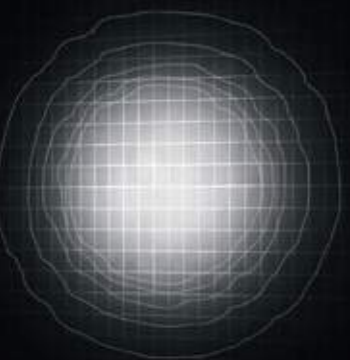
C 10° Narrow Beam



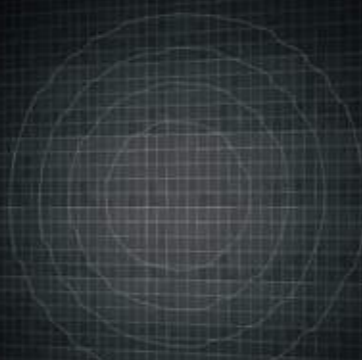
D 45° Wide Beam



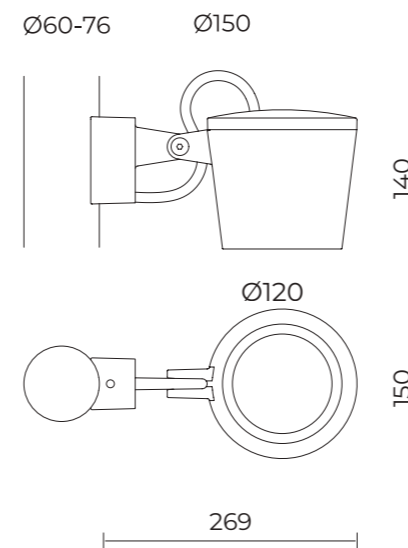
M 25° Medium Beam



U-D 90° Diffused Beam



Omikron  
Pole



DATI TECNICI / TECHNICAL DATA

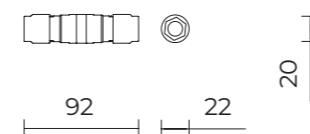
**Installazione / Installation:**  
palo Ø 60 - 76 mm / pole Ø 60-76 mm

Disponibili, su richiesta, versioni con honeycomb  
On request, are available versions with honeycomb

**Inclinazione / Inclination:**  
+90° ÷ -45°

ACCESSORI / ACCESSORIES

**06KS918C0**  
**B137 - Connettore 2 vie IP68**  
2-way connector IP68



**Metalmek Lighting B.V**

Canadabaan7-d  
5388 RT Nistelrode  
Tel. 0412-614033

[info@metalmek.nl](mailto:info@metalmek.nl)  
[www.metalmek.nl](http://www.metalmek.nl)

**Metalmek**

**Cariboni**  
group

 **LIVAL**

**NORDIC**  **ALUMINIUM**